

brinno
brilliant innovation



Motion Activated

Portable HomeWatchCam

MAC 100

User Manual

www.brinno.com

Thank you for purchasing Brinno HomeWatchCam!

Brinno portable **HomeWatchCam(MAC 100)** using **Motion Activated** technology to capture any movement in the detecting area, and turn the thousands photos into short **time-lapse** video, it will save lots time to review those photos! You can use HomeWatchCam for home security, or put it on your backyard to capture beautiful birds and tricky doggie!

HomeWatchCam Features



Motion Activated

Passive Infrared Red motion detection system can capture any movement in the detecting area.



Power Saving

HomeWatchCam come with unique Power control technology, 4 AA batteries can capture 50,000 frames .



Time Lapse Video

HomeWatchCam build-in Time Lapse technology, convert thousands photos become a several minutes video.



Portable

HomeWatchCam use 4 AA batteries, so you can place MAC100 in anywhere to capture any movement!



Home Security

Put your **HomeWatchCam** to aim to front door or windows, to capture the uninvited guest!



Easy to install

Universal design, easy to install!! You only need to Install batteries and power on it, that's all!

Minimum Requirements to install and run the software

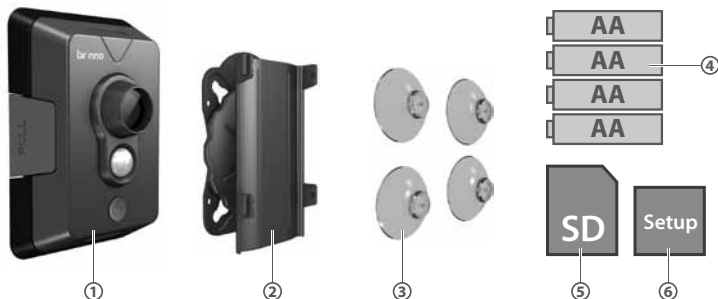
Microsoft Windows 98, XP, Vista and Win 7

HomeWatchCam Output file format

AVI format, resolution is 1280x 720.

Note: The maximum size of each single AVI file is 1024 frames.

Package Contents



1 HomeWatchCam

2 Mounting Holder

3 Rubber Suction

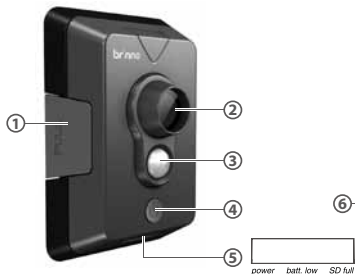
4 4 AA Batteries

5 SD card

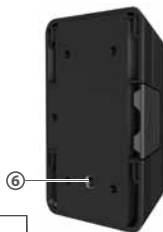
6 Setup Software (included in SD card)

Parts of the Camera

Front



Back



Open



1 Battery door latch

2 Lens

3 Motion Sensor

4 Power button

5 LED indicator

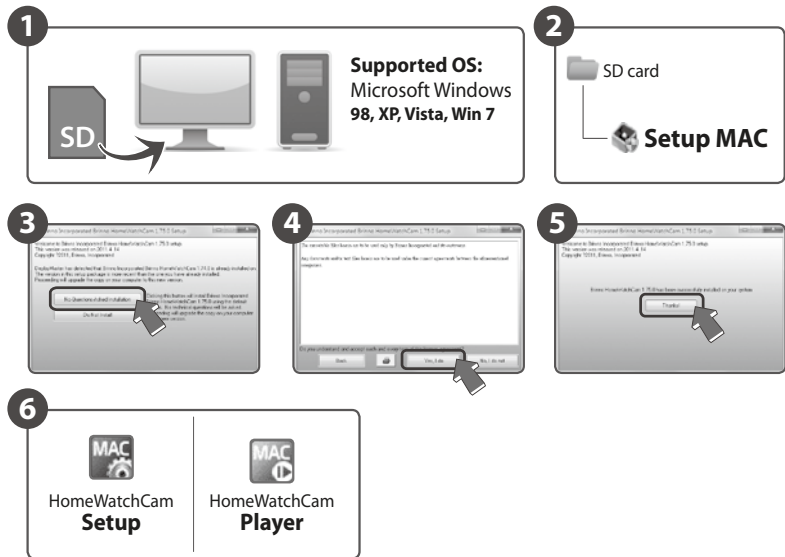
6 Tripod screw hole

7 Battery

8 SD card slot

Initial Setup-1 Install Software

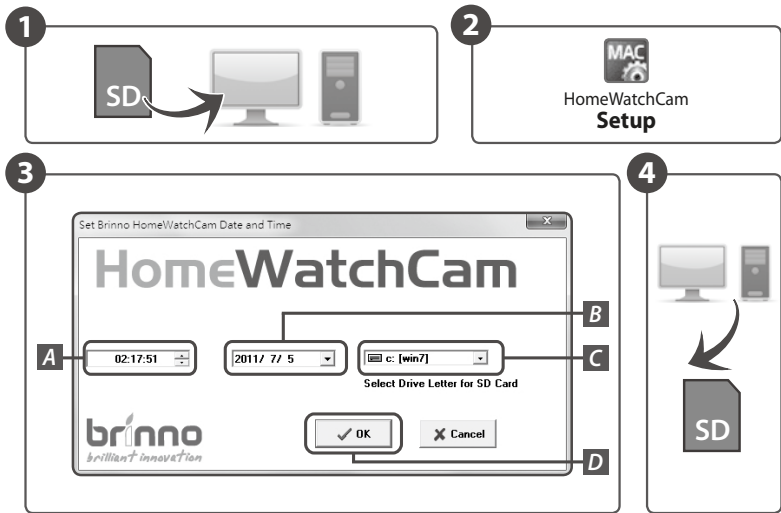
Before your first time to use HomeWatchCam, please complete Initial Setup 1~3 to ensure your HomeWatchCam will record the video with correct time stamp.



- 1 Insert SD card included into your computer or notebook.
- 2 Browse to the SD card, double click " **Setup MAC** " to install setup software.
- 3 Click " **No-Question-Asked Installation** " to process standard installation.
- 4 Click " **Yes, I do** " to start installation.
- 5 Click " **Thanks** " to finish installation.
- 6 There are two programs installed on your computer or notebook:
HomeWatchCam Setup allows you to set the date and time for your HomeWatchCam.
HomeWatchCam Player allows you to play the time lapse videos by HomeWatchCam.

Initial Setup-2 Set Date and Time

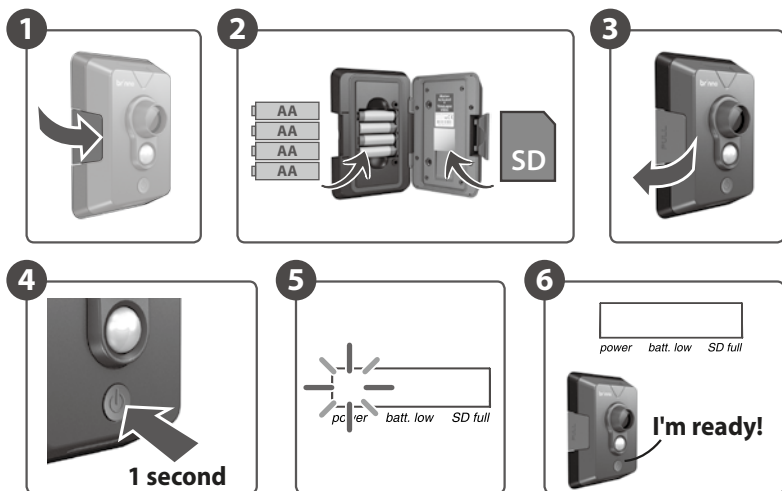
Before using your HomeWatchCam, please set the correct date and time, follow below steps:



- 1 Insert SD card included into your computer or notebook.
- 2 Run "**HomeWatchCam Setup**" program to set date and time.
- 3 At **Brinno HomeWatchCam Date and Time** program:
 - A. Set time
 - B. Set date
 - C. Select a drive letter assigned to your SD card drive.
 - D. Select "OK" to save setting file to SD card.
- 4 Remove the SD card from your computer, then go to next step.

Initial Setup-3 Insert Batteries and SD card

Complete this step to finish Date and Time setting, follow below steps:



Once you have set up your HomeWatchCam you are READY to use HomeWatchCam to capture any movement!

Installation Basic Installation

1

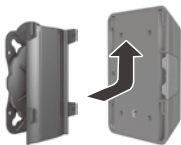


About Motion Sensor

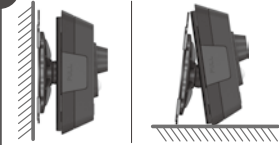
A°: Detecting Angle: **98°**

B°: Detecting Distance: **4 meters**

2



3



4

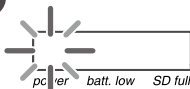


5



15 seconds

6



3 circles

7



1 The Motion Sensor detecting angle: **98°**, detecting distance: **4 meters**.

2 Insert Mounting Holder into HomeWatchCam.

3 Place the HomeWatchCam to the detecting area you want to capture:

A. Mounting on the wall.

B. Place on a plane.

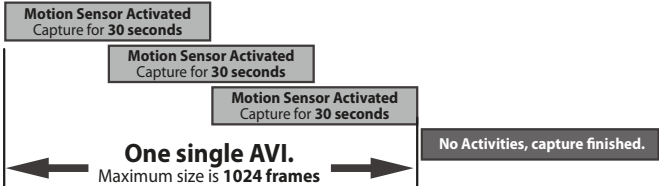
4 Hold power button for **1 second** to turn on HomeWatchCam.

5 The **Green LED** will light on for **15 seconds** to Warm up Motion Sensor, once the Green LED light stops that your HomeWatchCam is ready to work.

6 When the Motion Sensor activated at first three times, the Green LED light will flash during capture period, so you can test if the HomeWatchCam works well.

7 **Ready to capture any movement!**

8



9

LED Indicator



power batt. low SD full

Green: Power status

Red: Battery status

Blue: Memory card status

- 8 Once activated the HomeWatchCam will capture for 30 seconds, during this working period if the Motion Sensor activated again, it will extend the capture time for more 30 seconds, when HomeWatchCam finished the capture, all frames will be store into one AVI file.

9 LED Indicator:

9-1. Initial power on stage:

- If battery is work well, activate green LED in warm up period.
- If battery is low, flash red LED 6 times, then power off.
- If SD card is abnormal, flash blue LED 6 times, then power off.
- After the machine is ready, off green LED and into Motion Sensor standby mode.

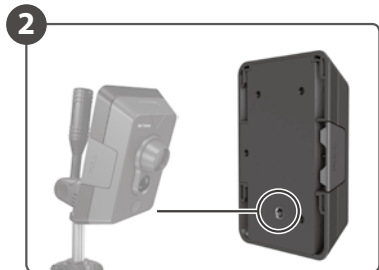
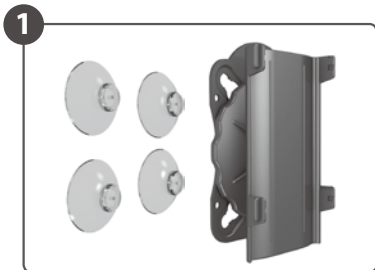
9-2. When the Motion Sensor is activated at first three times, flash Green LED in capture period, then disabled the green LED when the Motion Sensor is activated again.

9-3. When the machine is ready, push the power button:

- Green LED** will light on when the battery power is well.
- Red LED** will light on when the battery power is lower.
- Blue LED** will light on when the memory card is full and in looping mode.

9-4. When HomeWatchCam is powered on and in standby mode, hold the power button, Green LED will be activated in 3 second and flash Green LED 6 times, then power off.

Installation *Advanced Installation*



- 1 You can install **Rubber Suctions** onto Mounting Holder, to attach HomeWatchCam on windows or polish plane.
- 2 You can install HomeWatchCam on any standard tripod.

Software "HomeWatchCam" Player

1



HomeWatchCam
Player

2




- 1 Double click on the icon "HomeWatchCam Player" to start the program.

2 HomeWatchCam Player:

HomeWatchCam player is designed for use with the Brinno's HomeWatchCam.

The AVI file format produced by the HomeWatchCam is a Motion JPEG-encoded AVI in a standard format recognized by Microsoft's Windows Media Player and most other Generic Video Players.

 **NOTE** • *The HomeWatchCam Player is NOT a general-purpose media player. It is a dedicated Player designed specifically to play AVI's produced by the HomeWatchCam. AVI's NOT generated by Brinno's HomeWatchCam will not play properly with this player*

1.1. Menu Functions

1.1.1. File – Open

"File Open" lets you select an AVI file for loading and displaying. Multiple files can be selected, and will be added to the play list.

1.1.2. File – Save Current

"File Save". The currently-displayed frame can be saved as a JPEG file.

1.1.3. File – Exit

This exits the application. The standard Windows close application commands will also function.

1.2. Drag and Drop Interface

In addition to the standard menu commands, HomeWatchCam Player supports a "drag-and-drop" interface. If the application is open, dragging and dropping a file or group of files can add them to the selected files to the playlist.

Statistics display



Key statistics for the video sequence are shown in a statistics box, displayed in the upper-right corner of the application window.

Elapsed Time: This is the amount of time elapsed since the beginning of the sequence.

Date/Time: Assuming that the correct date and time have been set in the camera's real time clock, this is the time and date at which the currently-displayed frame were captured.

1.3. Speed Control



The Speed Control is a vertical tracking control on the right side of the display window. This is used to set the playback rate. Because this is a time-lapse video, the playback rate has to be different from the recording rate. Note that in some installations, if the requested playback rate exceeds the host PC's ability to decompress and display frames, some frames may be skipped in order to keep up with the requested time-lapse video rate. For a mode in which frames will never be skipped, read about the Motion Search feature, described below.

1.4. Play Controls



Controls are enabled or grayed-out, depending on their functionality. For example, while playing the video forward or backward the single-step buttons are grayed out.

1.4.1. Forward Play Control



The forward play control functions is the same as the play control on most media players. Pressing this button with the mouse causes the player to continuously display frames until the end of the sequence is reached, or the stop or pause control is pressed.

1.4.2. Reverse Play Control



The reverse play control causes the player to play in reverse until either the beginning of the sequence is reached, or the stop or pause control is pressed.

1.4.3. Single Step Forward Control



Pressing this control causes the player to display the next frame in the sequence.

1.4.4. Single Step Backward Control



Pressing this control causes the player to display the previous frame in the sequence.

1.4.5. Pause Control



Pressing this control during play stops the player at the current frame. In Pause mode, single step forward and backward are enabled.

1.4.6. Stop Control



Pressing this control during play stops the player, and returns it to the first frame of the sequence. Single-step forward function is enabled.

1.5. Seek Control



When the player is in Pause or Stop mode, the seek control is displayed. This can be used to seek any point in the sequence, either by watching the images in the display window, or by monitoring the elapsed time or real-time indicators.

NOTE

- *During play mode, the seek control is concealed.*

1.6. Playlist



HomeWatchCam Player allows you to play multiple files, either from the same directory or from multiple directories. To add files to an existing playlist, simply drag and drop one or more files into the HomeWatchCam Player

window. Alternatively, using the "File – Open" dialog box will allow you to select multiple files.

Files will be sorted in the playlist by their date and time stamp.

Wherever possible, the HomeWatchCam Player moves from one file in the playlist to the next, whether in regular play, single-frame, or motion search mode.

To skip files in the playlist, you can either click on the "Previous" or "Next": buttons, or you can double-click on any filename in the playlist. To clear the playlist, you can click on the "Clear" button.

1.7. Motion Search



For certain uses such as surveillance and security applications, HomeWatchCam Player incorporates a motion search algorithm. This lets you quickly scan through long sequences in which nothing moves, and only see frames

where the scene has changed.

Motion Search is only available when HomeWatchCam Player is in a paused or stopped state.

Note that during motion search, the main display

is not updated. This allows the motion search to proceed more quickly than normal playback.

A subset of the image is displayed above the motion search controls, to provide visual feedback.

1.7.1. Threshold

This sets how sensitive the motion detection is. A value of 0 is most sensitive; any variation from one frame to the next stops the motion search.

A threshold of 255 or greater is least sensitive; no change in the image will stop the search.

1.7.2. Search Forward



HomeWatchCam Player scans from the current frame toward the end, looking for a frame differing from the previous frame by more than the threshold value. When HomeWatchCam player detects a frame with motion, that frame is displayed in the main image window and the player is put into Pause mode.

1.7.3. Search Backward



Backward motion search functions the same as forward motion search, except that it scans from the current frame toward the beginning of the sequence.

1.7.4. Stop Motion Search



Stop Motion Search stops the motion search at the current frame, and place HomeWatchCam player into Pause mode.

Note

Specifications

Model	MAC 100
Video Resolution	1280x 720 (HD Resolution, AVI format)
Field of View	61°
Motion Sensor	Detect Angle: 98° Detect Distance: 4 meters
Capture Time	One activated capture photos for 30 seconds
Time Interval	Captures 10~30 frames in 30 seconds. (Capture rate may reduce its frames while media capacity reduced.)
Memory Storage	Up to 16GB SDHC card
Power Source	4 AA Batteries
Size (DxWxH)	160 x 108 x 57 mm
Weight	305g (without batteries)
OS Requirements	Microsoft Windows 98/ XP/ Vista/ Win 7

Package Contents

HomeWatchCam (MAC100)	1	Rubber Suction	4
2GB SD card	1	Setup Software (included in SD card)	
AA Batteries	4	User Manual	1
Mounting Holder	1	Warranty Card	1

Thank you for purchasing Brinno HomeWatchCam!

If you have any questions or problems setting up your Brinno HomeWatchCam please contact the sales staff where you purchased our product or email us at Brinno Incorporated directly
customerservice@brinno.com

Please Visit our website
www.brinno.com

brinno
www.brinno.com

brinno
brilliant innovation

7F, No. 75, Zhou Zi St., Taipei City 11493, Taiwan
Phone: +886-2-8751-0306 Fax: +886-2-8751-0549
Email: customerservice@brinno.com



301-0012-00
EN-A2