

PeepHole Camera Visitor Log Cam SHC1000 User Manual

www.brinno.com



Register @online

www.brinno.com/support/registration

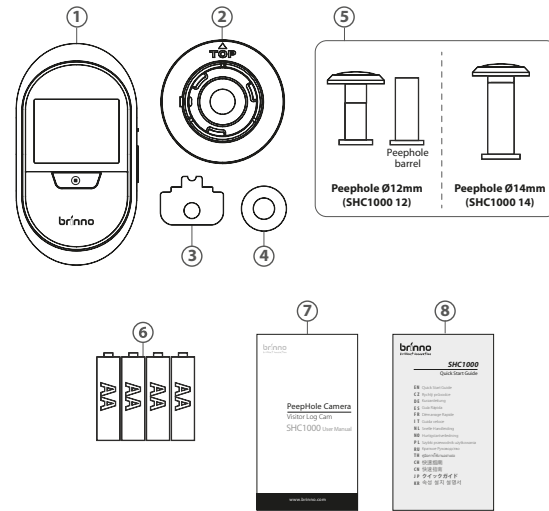


For manuals in other languages, visit
www.brinno.com/support

The product features, specifications sheets and instructions may differ from actual products. Please refer to Brinno official site for the latest version of user manual.



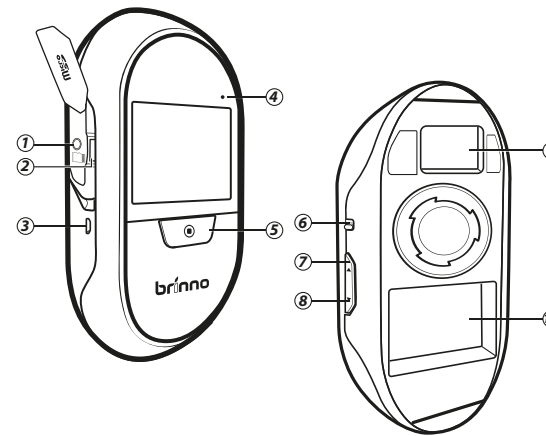
1 Package Contents



1. PeepHole Camera
2. Base Flange
3. Tightening Tool
4. Washer (SHC1000 12 only)
5. Peephole
6. 4 AA Batteries
7. User Manual
8. Quick Start Guide

⚠ Use the peephole in the package to get the best result.

2 Device Parts



1. Locking screw
2. Micro SD card slot
3. Micro USB port
4. LED Indicator:
LED On: Battery low. Alert to replace the batteries.
LED Flashing: Camera is capturing photos.
5. Live view/ Shutter button
6. Power switch
7. Playback/ Up button
8. Settings/ Down button
9. Extension port (For optional motion sensor)
10. Battery compartment

3 Display Icons

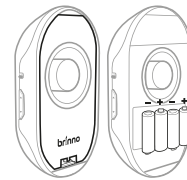


1. Micro SD card status:	
	No Micro SD card
	Micro SD card full
	Micro SD card error
2. Motion sensor (Optional):	
	Motion sensor connected
	Motion sensor disconnected
	Motion sensor battery low
3. Knocking sensor ON	
4. Battery indicator	
	Replace batteries

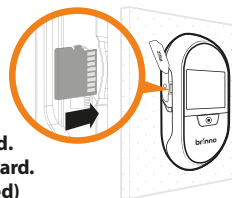
⚠ When Micro SD card is full, please delete files to free up storage space.

4 Install Batteries & Micro SD Card

1. Open the battery cover.
2. Install 4 AA batteries.

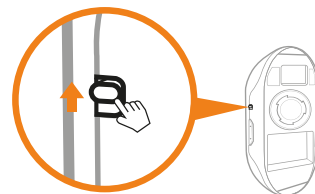


3. Insert Micro SD card.



**⚠ * Micro SD Card is not included.
* Support up to 32GB Micro SD card.
(8 GB Class 10 is recommended)**

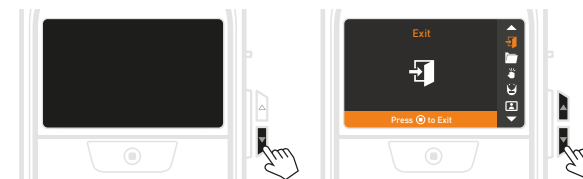
5 Turn on camera



1. Power ON
Turn on power. The LCD screen displays live view images outside the doorstep.
2. Power WAKE-UP
LCD screen is automatically turned off to save power when camera is not in use for 10 secs. Press **LIVE VIEW BUTTON** to wake up camera again.

6 Menu Settings

Press **DOWN BUTTON** to enter "MENU SETTINGS".
(Press **UP** or **DOWN BUTTON** to browse setting options.)



Browse Images

Replay visitor photos (Details in Section 11- **IMAGE PLAYBACK**)

Knocking Sensor

Auto capture photos when someone knocks on your door.
(Details in Section 12- **ENABLE KNOCKING SENSOR**)

Motion Sensor

Auto capture photos when someone is near your front door. Refer manual of motion sensor(MAS200) inside the package for details.

LCD Option

When LCD option is ON, the screen auto displays images if camera detects knocking on the door or motion outside the door (must with motion sensor). Setting LCD option OFF can save power and make battery last longer.

System Clock

Storage & Battery

Camera info

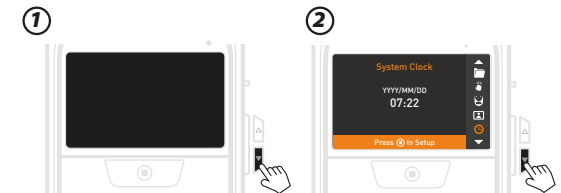
Camera firmware version.

Reset

Reset camera to factory settings.

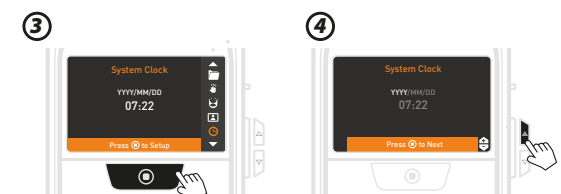
Exit

7 Set Up Date & Time



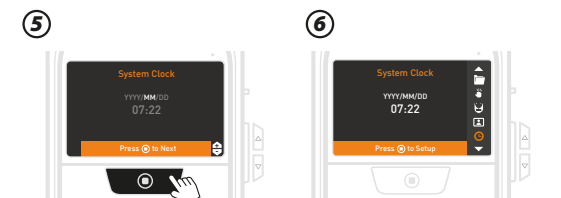
Press **DOWN BUTTON** to go to **MENU SETTINGS**.

On **MENU SETTINGS** screen, press **DOWN BUTTON** to go to the **SYSTEM CLOCK** option.



On **SYSTEM CLOCK** screen, press **SHUTTER BUTTON** to set date and time.

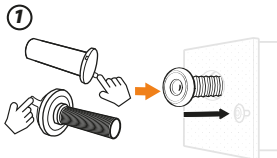
Change settings by pressing **UP** or **DOWN BUTTONS**. Then press **SHUTTER BUTTON** to confirm and go to next option.



When finished, press **SHUTTER BUTTON** to return to **MENU SETTINGS**.

8 Install Lens & Camera

1. Remove the protective film from the peephole lens. Insert it into the drilled hole on the door from outside.



2. **For the 12mm Peephole** (For most North American users.) Position the Peephole barrel through the washer into the base flange from inside of the door. Tighten it.

For the 14mm Peephole

Position the Peephole barrel into the base flange. Tighten it.

2

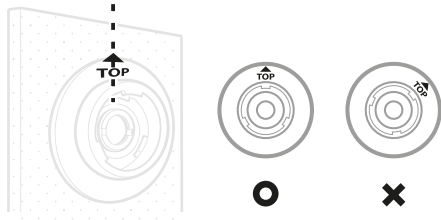


For the 12mm Peephole

For the 14mm Peephole

3. Make sure the TOP icon is facing up.

3

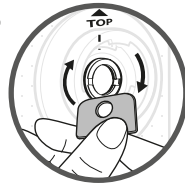


4. Use the tightening tool to tighten the peephole barrel.

▲ **Both sides of the tightening tool can be used.**

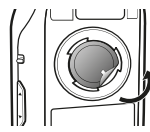


4



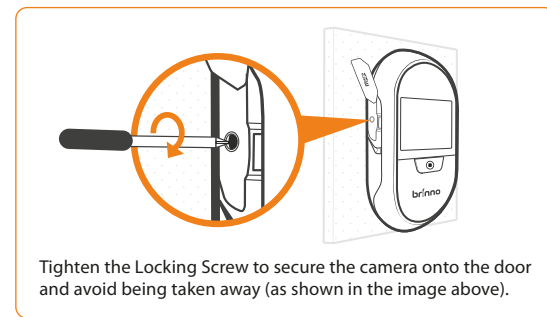
5. Remove the protective film from the lens of the camera.

5



6. Attach the camera to the flange. Rotate it clockwise and lock the camera.

6



Tighten the Locking Screw to secure the camera onto the door and avoid being taken away (as shown in the image above).

9 Live View & Capture Photo



1. **Live View**
Press **SHUTTER BUTTON** to turn on LCD screen and display images at your front door.



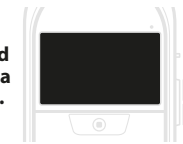
2. **Capture Photos**
When in **LIVE VIEW** state, press **SHUTTER BUTTON** to capture photos. (RED LED blinks when camera is recording. One recording takes 8 photos.)

10 Auto Capture Photos

TWO ways to auto capture photos:

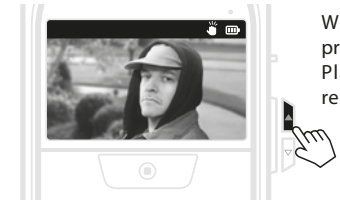
- Triggered by **KNOCKING** detection:
It is a built-in function of which the sensitivity level is adjustable (Section 12- **ENABLE KNOCKING SENSOR**).
- Triggered by **MOTION** detection:
It is a separate accessory you place outside on/near your door (Details see MAS200 motion sensor manual).

▲ **Power Saving Mode:**
LCD screen is automatically turned off to save power when camera detects no activity for 10 secs.



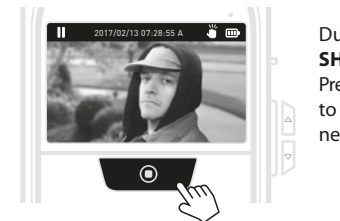
11 Image Playback

11-1 Auto Playback

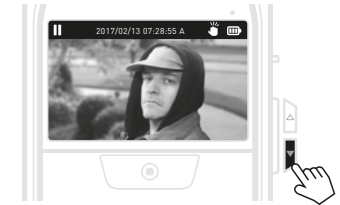


When in **LIVE VIEW** state, press **UP BUTTON** to select Playback mode and auto replay daily visitor photos.

11-2 Manual Playback



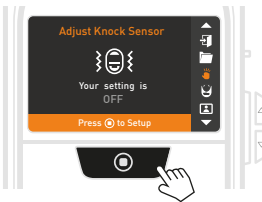
During auto playback, press **SHUTTER BUTTON** to pause. Press **UP** or **DOWN BUTTON** to manually view previous or next photo.



12 Enable Knocking Sensor

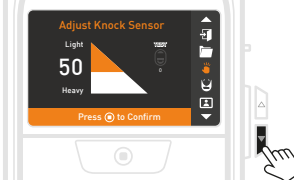
1. On Knock Sensor screen, press **SHUTTER BUTTON** to set up knock sensitivity.

1



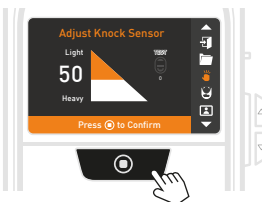
2. Press **DOWN BUTTON** to enable knocking sensor, the sensitivity default setting at 50, the mid-level.

2



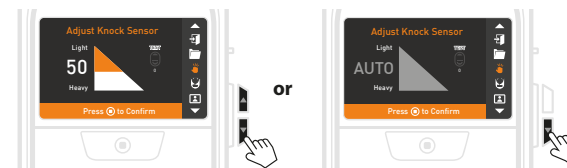
3. Press **SHUTTER BUTTON** to confirm and return to **MENU SETTINGS**.

3

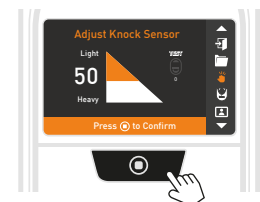


4. Adjust knock sensitivity:
If the knock sensitivity doesn't fit your needs, go to Knock Sensor setting screen to adjust knock sensitivity:

4-1. Press **UP** or **DOWN BUTTON** to increase or decrease knock sensitivity level, or hold **DOWN BUTTON** to **AUTO** mode, then knock on the door until the **TEST** icon flashes on.



4-2. Press **SHUTTER BUTTON** to confirm and return to **MENU SETTINGS**.



▲ **Setting knocking sensor too sensitive will add frequency of triggering. It will give you more alert messages and photos of your front door area, however, shorten your battery life.**

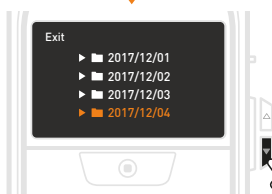
11-3 Playback by Date

- When in **LIVE VIEW** state, press **DOWN BUTTON** to enter "**MENU SETTINGS**".
- Select "**Browse Images**": Press **SHUTTER BUTTON** to go to **DAILY FOLDER** screen. Select the desired daily folder and press **SHUTTER BUTTON** to auto replay photos.

1



2



11-4 Exit

During auto playback, hold **SHUTTER BUTTON** to return to **DAILY FOLDER** screen. Choose "**Exit**" and press **SHUTTER BUTTON** to exit and turn off LCD screen.

- At pause mode, the LCD goes back to **DAILY FOLDER** screen when no activity for 15 secs.
- Image folders stored in the SD card can be accessed, edited or deleted on computer.

13 Specifications

	Model SHC1000 12	SHC1000 14
Peephole Barrel	15/32"(12 mm)	5/9"(14 mm)
Applicable Door Thickness	1-1/8" to 2-1/4" (28~58mm)	1-3/4" to 3-1/8" (43~80mm)
View Angle	90°	
Peephole Type	Optical grade lens peephole	
LCD Screen	2.7" TFT	
Storage	Micro SD card (Support up to 32 GB. 8GB Class 10 is recommended.)	
File Format	JPEG	
Power Source	4AA batteries (included)	
Battery Life	Approx. 1,800 triggers	
Operating Temperature	32 °F ~ 113 °F (0 °C ~ 45 °C)	
Contents	Peephole, Base flange, Tightening tool, 4AA batteries, User manual, Quick start guide.	
Size (WxHxD)	3.4"x6.2"x1.3" (87 x 158 x 34 mm)	
Weight	6 oz (170 g) (without batteries)	
Built-in Sensor	Knocking sensor	