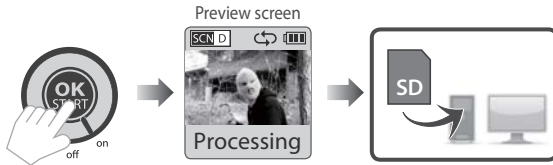


STEP 5. Finish



While recording, hold the "OK" button until the LCD light turns on and shows the text "Processing", it means the camera is processing file closing. When completed the processing it will display the text "Ready" This indicates the recording session is complete.

Remove the SD card from the camera, and insert it into your computer or laptop to enjoy your amazing Time Lapse Videos!

Technical Specification

Capture Time	10 seconds per trigger
Time Interval	Capture 1~4 frames <i>per</i> second. (Depends on SD card speed)
Detection Distance	4 meters (13 feet)
Detection Angle	90°

TimeLapse

BMC100- Motion Activated Camera



BMC100 Quick Guide

brinno
brilliant innovation

7F, No.75, Zhou Zi St., Taipei City11493, Taiwan
Phone: +886-2-8751-0306 Fax: +886-2-8751-0549
customerservice@brinno.com www.brinno.com
Made in Taiwan

www.brinno.com

brinno
brilliant innovation

Motion Activated Camera BMC100



① TimeLapse Camera (TLC200 f1.2)



② Motion Sensor (ATM100)



③ Camera Wall Mount (AWM100)

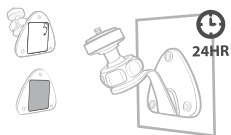
BMC100 - Installation

STEP 1.

Install the AWM100.

A By sticker (smooth surface)

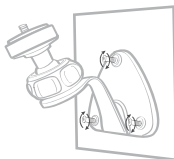
Clean up the flat surface, be sure there is no dust on the surface. Remove the sticker seal, paste on the wall for at least **24 hours**.



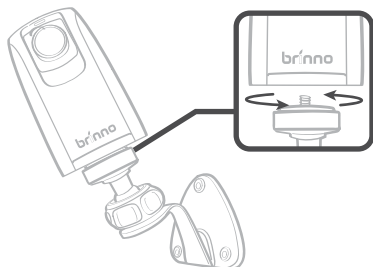
or

B By screw (brick)

Use the screw to fix on the wall.

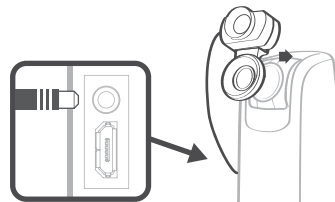


STEP 2.



Install the **TLC200 f1.2**.

STEP 3.



Install the **ATM100**.

STEP 4. Start Recording

1



1. Switch **ON**.

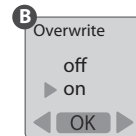
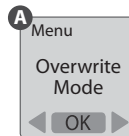
2 Set up screen



2. The LCD will show set up screen.

Note - Overwrite Mode

The camera will be automatically activated overwrite mode once Motion Sensor (ATM100) is plug in camera, you can go to camera setting menu to change if necessary.



- A Press **MENU**, select the **Overwrite Mode**.
- B Choose **on** or **off** to set up overwrite mode.

3



Preview screen



Preview screen



3. Press **OK** twice to the recording process.