

# TimeLapse

LABCAM - Microscope Adapter AMH100



## *LABCAM* Quick Guide

[www.brinno.com](http://www.brinno.com)

**brinno**  
*brilliant innovation*

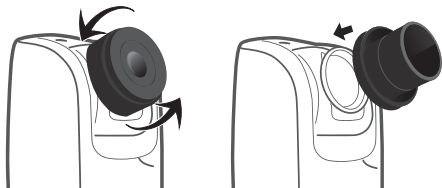
## Parts of Microscope Adapter-AMH100



- ① Microscope Adapter ② Screw hole ③ M2 Screw

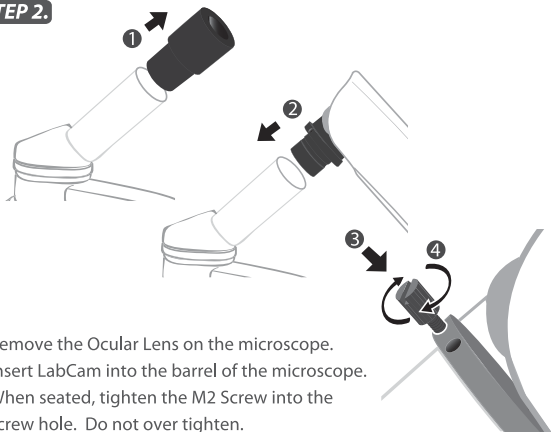
## LABCAM - Installation

### STEP 1.



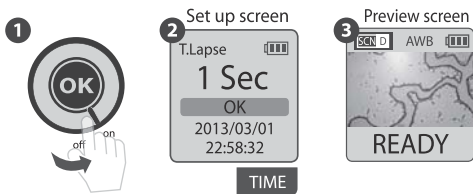
Replace TLC200 Pro lens with the Brinno Microscope Adapter(AMH100).

### STEP 2.

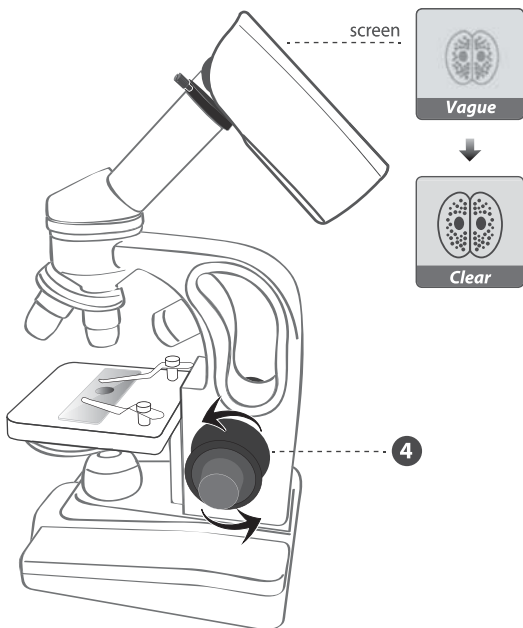


Remove the Ocular Lens on the microscope.  
Insert LabCam into the barrel of the microscope.  
When seated, tighten the M2 Screw into the  
screw hole. Do not over tighten.

## STEP 3. Start Recording



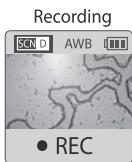
1. Switch **ON**.
2. Select the suitable time interval, press **OK**.
3. Press **OK** to the Preview Screen.



4. Adjust microscope focus knob through TLC200 Pro viewfinder.

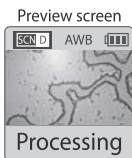
**!** If necessary, please use TLC200 Pro focus mode to fine tune the focus.

5



5. Press **OK**, then start recording(REC).

## STEP 4. Finish



While recording, hold the “OK” button until the LCD light turns on and shows the text “**Processing**”, it means the camera is processing file closing. When completed the processing it will display the text “**Ready**”. This indicates the recording session is complete.

Remove the SD card from the camera, and insert it into your computer or laptop to enjoy your amazing Time Lapse Videos!

## Specification

<b>Model</b>	AMH100
<b>Size</b>	Ø23mmx25mm(length)
<b>Weight</b>	10g
<b>Material</b>	Aluminum alloy
<b>Color</b>	Black