

TimeLapse

BFC100- Self-Portrait Camera



BFC100

Quick Guide

www.brinno.com

brinno
brilliant innovation

Self-Portrait Camera BFC100



① TimeLapse Camera
(TLC200 f1.2)



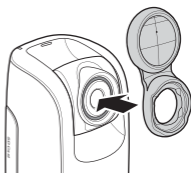
② Self-Portrait Mirror & Shutter Line
(ATS110)

BFC100 - Installation

STEP 1.

Install the **Self-Portrait Mirror**.

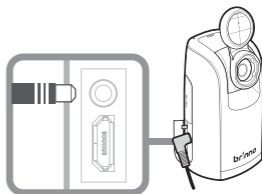
Attach the magnetic holder onto the camera lens ring as shown in the illustration.



STEP 2.

Install the **Shutter Line**.

Plug the Shutter Line into the extension port of the camera.



STEP 3. Configuring Settings

1



1. Switch **ON**.

2

Set up screen



2. The LCD will display the Set up screen.

3

Stop Motion & Output Folder

To record any event that changes over time, it is recommended to specify the **Output Folder (File A / File B / File C / File D)**.

- Select a different folder to store captured shots based on its category (i.e. "**Activities**" or "**People**").



As long as the same folder is being selected, the system will **Continue Saving** the recorded shots from the last recorded image in the folder.

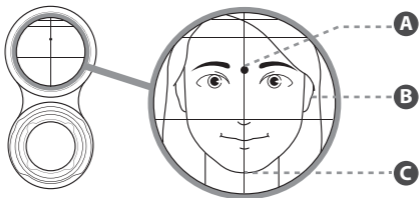
3. Select **Stop Motion** or specify the desired **Output Folder**.

4



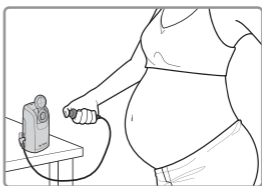
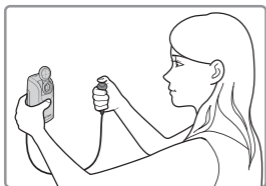
4. Press **OK** to confirm the setting.

STEP 4. Face Alignment



For Self-Portrait Time Lapse photography, use the self-portrait mirror to ensure your face position will be at the center of the captured frame: Look at the **Aiming Point (A)**, place the **Vertical Line (C)** at the middle of your face, then align your mouth or chin to the **Horizontal line (B)**.

STEP 5. Start Recording



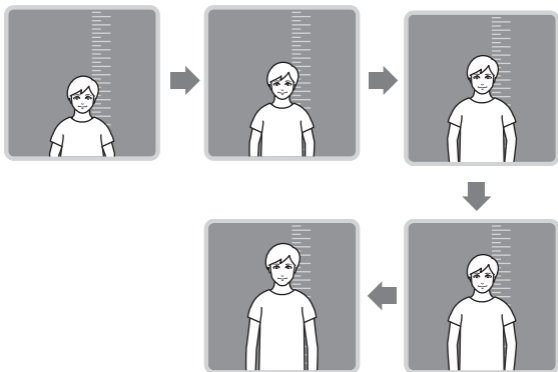
To capture a shot, press the shutter button for **1** second to snap and wait for **5** seconds before capturing the second shot. To maintain the same position, remember to keep the same **Capture Distance** everytime you capture a shot.



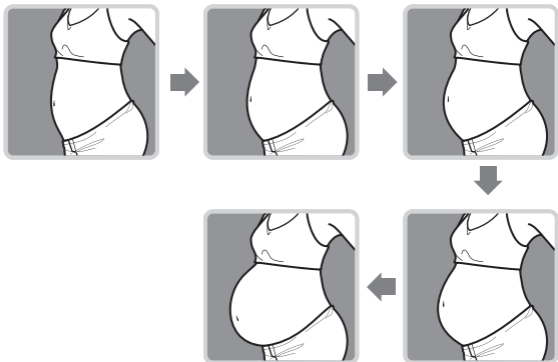
The **Red Led** indicator blinks when it is recording. Remain in the same position until the LED indicator turns **Green**.

Recording Features

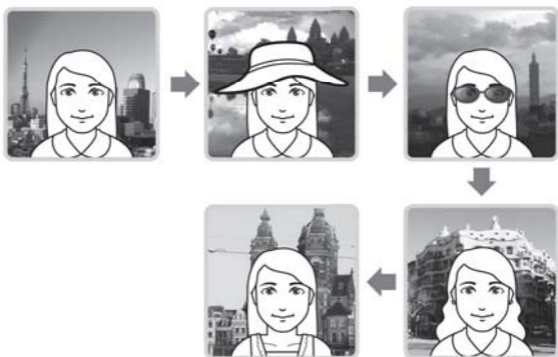
Track your Child's Growth



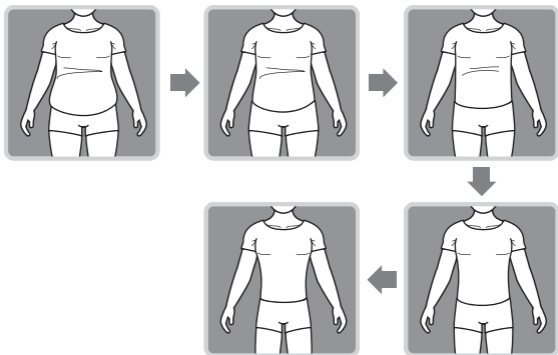
Visual Pregnancy Diary



Traveling Journal



Record Weight Loss



STEP 6. Finish

Hold the "OK" button until the LCD light turns on and shows the text "Processing", it means the camera is processing file closing. When completed the processing it will display the text "Ready" This indicates the recording session is complete.

Remove the SD card from the camera, and insert it into your computer or laptop to enjoy your amazing Time Lapse Videos!

Technical Specification

Power Source	4 AA Batteries/DV IN: 5V (Micro USB connector)
Memory Storage	SD Card (Support up to 32 GB)
Image Format	JPEG, 1280x720
Focus Distance	30 cm (minimum)